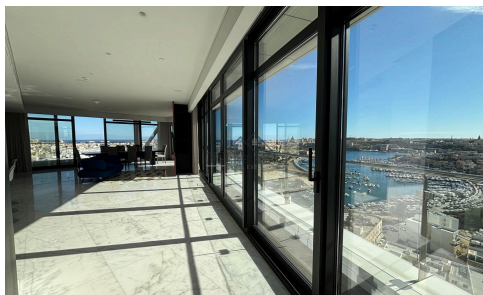
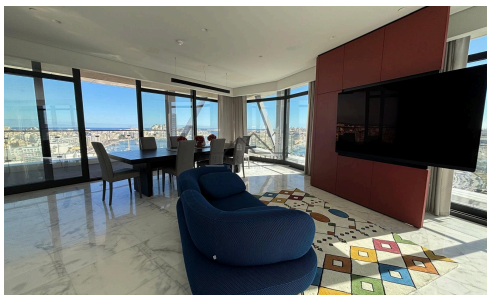


SAPT25195



 Gzira, Sliema Area

€2,950,000

Welcome to an exceptional living experience in one of Malta's most illustrious towers. Perfectly situated just a short stroll from vibrant day-to-day amenities, stunning beaches and exquisite restaurants, this one-of-a-kind 252sqm property presents an unparalleled lifestyle, offering mesmerizing 360-degree views that encompass the serene landscapes of Manoel Island, the historic charm of Valletta, the lively atmosphere of Sliema, the trendy ambiance of St. Julian's, the picturesque panoramas of Ta' Xbiex and the inland.

As you step into this meticulously furnished apartment, you are greeted by a striking entrance hall that sets the tone for the elegance to come. The spacious open-plan layout seamlessly integrates the fully equipped kitchen, living, and dining areas, creating the perfect space for entertaining or intimate gatherings. Large glass doors open onto

Bedrooms

 **3**

Bathrooms

 **3**

Covered

 **252 m²**

