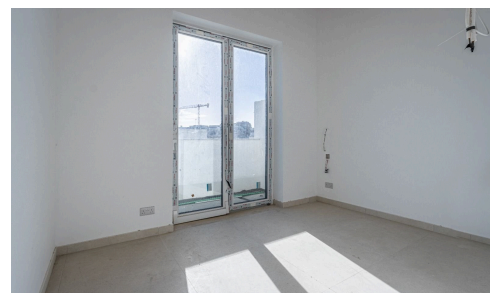


SPH20963



2 Bedroom Penthouse In Swieqi

€645,000

📍 Swieqi, Sliema Area

A large 2 bedroom Penthouse, situated in a new development on a quiet street.

Car spaces are also available. Close to all amenities.

Completion date is set for July 2023

Bedrooms

🛏 2

Bathrooms

🚿 2

Covered

📏 137 m²



Stefan Consiglio

☎ (+356) 79797956

✉ stefan@pierrefaure.com

