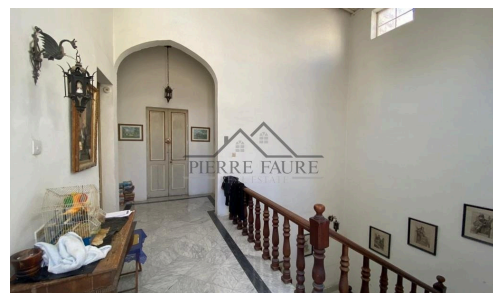
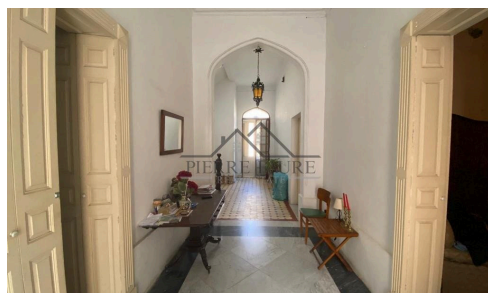
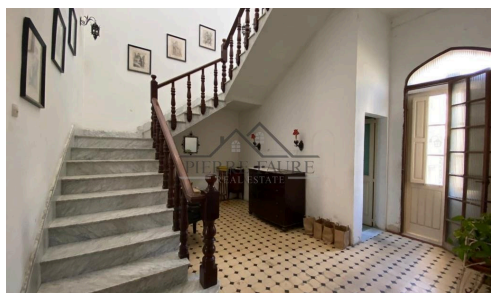


STWH19472



 Sliema, Sliema Area

€0

One of Sliema's most imposing double fronted townhouses, boasting a unique and impressive neo-classic facade .

Property boasts a most welcoming entrance hall with large bi-lateral rooms with patterned tiles and all the features you would expect from a property of this period. large kitchen,, dining, breakfast and study with separate entrance from the street.

Setting this house apart from all the rest is an interconnected garage and a large mature garden measuring circa 250sqm where one can easily house a swimming pool plus entertaining areas (possibility of development also). 5 to 6 bedrooms, 4 bathrooms, laundry, ample storage room, large cellar in a full basement (6 rooms) and a secondary

Bedrooms

 5

Bathrooms

 4



Stefan Consiglio

 (+356) 79797956

 stefan@pierrefaure.com

